

Biological Wastewater Process Control Seminar

Training Seminar Overview:

This 2-day (16 hours) course is approved as Training for Wastewater Operators, Engineers, & Laboratory personnel

This seminar will present the process control methodologies and laboratory techniques necessary to control the activated sludge process or any wastewater treatment system with an emphasis on process monitoring & trouble shooting. These approaches are equally applicable to domestic and industrial facilities. Past participants from industries such as Food and Beverage, Wineries, Chemical, Papermill & petrochemical have been successful in applying these methods to control their processes. Municipalities will greatly benefit from this training course. The course will consist of lecture, microscopic analysis, plant audit, demonstrations of certain laboratory procedures and microscope use.

Course Materials

Each attendee will receive complete class notes on a CD or FlashDrive also included is our Wastewater Microscopic / Biological Training information ... valued at \$275.00.

Who should attend?

The course is designed for all wastewater professionals, particularly operations personnel, such as operators, engineers & laboratory personnel.

Registration Form – 2-Day Training
Biological Wastewater Process Control Seminar
by Tracy Finnegan-Environmental Leverage® Inc.

April 8th & 9th 2025

Tuesday and Wednesday

8am - 4:30pm both days

Seminar held at:

Environmental Leverage Inc.

1454 Louis Bork Drive

Batavia, IL 60510

Name

Position or Title

Organization

Business Address

City, State & Postal Code

Phone

Email

Registration Fee

Full 2 Day Course \$395

Includes lunch both days of class

Method of Payment

Check, Visa, Master Card, Discover or PO#

Please make checks or purchase orders to:

Environmental Leverage Inc.

812 Dogwood Dr., Suite A

North Aurora, IL 60542

Email: elfenvironmental@aol.com

Course Outline

Day 1 Schedule

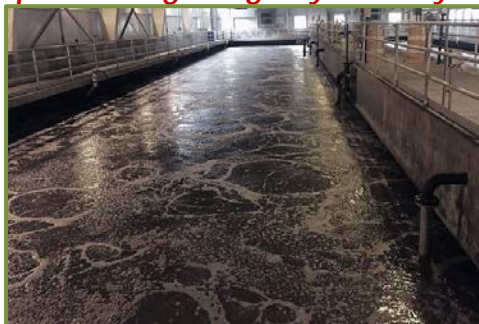
Wastewater Basics Overview
Microbiology Overview
Floc & Filaments Analyses
Microscope Use, Techniques & Stains
Lab Sample Handling & Prep
Hands on Microscopic Observation
Visual Observations & Troubleshooting
Filaments, Zooglea & Foam control
Solids Carryover & Settling Problems

Day 2 Schedule

Process Overview & Process Variations
Process Control Strategies
Equipment Optimization,
Preliminary, Primary, Secondary,
Clarifiers, Digesters and Dewatering
Settleometer, Clarifier Simulation Test
Sludge Judge Profile
Land Application & Biosolids Handling
Environmental Issues
Troubleshooting
Case Histories - Plant Examples



Are Wastewater Treatment problems getting to you lately?



Don't miss this opportunity to increase your knowledge of biological process control in your wastewater treatment system. Learn how to troubleshoot and optimize your treatment system.

General Information:

Registration first day is at 7:45 a.m.

2-Day course begins at 8:00 a.m. to 4:30 p.m.

April 8th & 9th 2025

Tuesday and Wednesday

Lunch will be provided both days

Let us know if you're from surrounding states for CEU approvals

Register by mail, telephone, email or fax:

Environmental Leverage® Inc.

Registration address Only:

Class held at our location in Batavia

812 Dogwood Drive - Suite A

North Aurora, IL 60542

Fax: 630-906-9792

Phone: 630-906-9791

elfenvironmental@aol.com

The Course Instructor:

Tracy Finnegan is an environmental engineer with Environmental Leverage® Inc., Illinois. She was formerly associated with Nalco and Suez, where she worked for more than 12 years in numerous positions related to research, operations, design evaluation, auditing and troubleshooting wastewater systems. She now operates her own Environmental Engineering Company that supplies products, training, lab services, audits and auditing services.

www.EnvironmentalLeverage.com

Tracy has taught biological wastewater process control to operators & engineers for over 34 years and performed audits and troubleshooting at over 6000 industrial and municipal treatment plants. Tracy holds a BS degree in Business Chemistry from Northern Illinois University.

She is a co-author in WEFTEC's Book Wastewater Biology: The MicroLife, and has now developed 12 new wastewater Training CD's.

She also created online Wastewater ELearning Training for CEU'S

<https://www.wastewaterelearning.com/elearning/index.php>

Course / Seminar Location:

Environmental Leverage Inc.

1454 Louis Bork Drive

Batavia, IL 60510

This course is approved for numerous states

Other states may have different credit systems.

Contact us for approvals in other states for this class.

For additional information contact:

Elfenvironmental@aol.com or
(630)-906-9791

2-Day Biological Wastewater Process Control Seminar

April 8th & 9th 2025

Tuesday and Wednesday

8am - 4:30pm

Register early, class size is limited!

Hands-On & Interactive Training Course

Training provided by Tracy Finnegan of:

