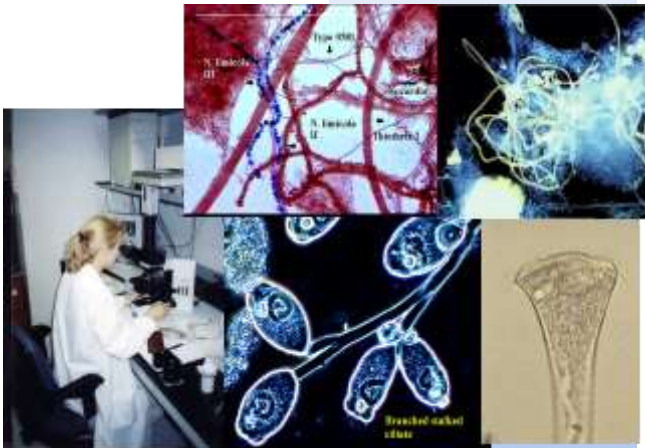


# *It's Finally Here!* **Filamentous Identification The Easy Way™!!!**

A Seminar Sponsored by  
**Environmental Leverage® Inc.**  
**The Village of Fox Lake**



**© Course Materials**  
Each attendee will receive  
complete class notes & our  
latest version of  
**"Filamentous Identification  
The Easy Way™"**

Training CD valued at \$375.00.

## Registration Form

**Filamentous Identification The Easy Way™!**

**April 9 -10<sup>th</sup> 2015 – 8:30am – 4:30 pm**

**At the Village of Fox Lake**

**200 Industrial Ave  
Fox Lake, IL 60020**

\_\_\_\_\_  
Name

\_\_\_\_\_  
Position or Title

\_\_\_\_\_  
Organization

\_\_\_\_\_  
Business Address

\_\_\_\_\_  
City/State, Province, Postal Code

\_\_\_\_\_  
Business Phone

\_\_\_\_\_  
Business Fax or e- mail

\_\_\_\_\_  
Registration Fee

Full Course - \$375

Late Fee - \$25 (After April 1st)

\_\_\_\_\_  
Method of Payment

Check, Visa, Master Card, Discover or  
Purchase order

**Please make checks or purchase orders out to:**

*Environmental Leverage Inc.*

**Total Amount enclosed \$**\_\_\_\_\_

### **2-Day Class Outline**

#### **Day 1**

*Microbiology Overview*

*Floc Analyses*

*Sample Handling & Prep.*

*Filamentous Identification*

*Causes and Controls*

*Troubleshooting, Case Histories*

*Process Control Strategies*

*Filaments and Foam control*

*Solids Carryover & Settling*

*Problems*

*Hands on Microscope/wet Mounts*

#### **Day 2**

#### **Hands on workshop**

*Microscope Use/Filaments*

*Stains & Techniques*

*Hands on Microscopic*

*Observation*

*Test Samples*

*Individual Plant Samples*

*Plant Troubleshooting*

#### **Who should attend?**

*The course is designed for all wastewater  
professionals, particularly operations  
personnel, such as operators, engineers  
and laboratory personnel.*

*The course size is limited to the first 18  
people for this class.*

**April 9 - 10th, 2015**

# Filamentous Identification The Easy Way™!!

For additional information contact:  
Environmental Leverage® Inc.  
630-906-9791 or  
[elfenvironmental@aol.com](mailto:elfenvironmental@aol.com)

*Training Seminar held at the  
The Village of Fox Lake*

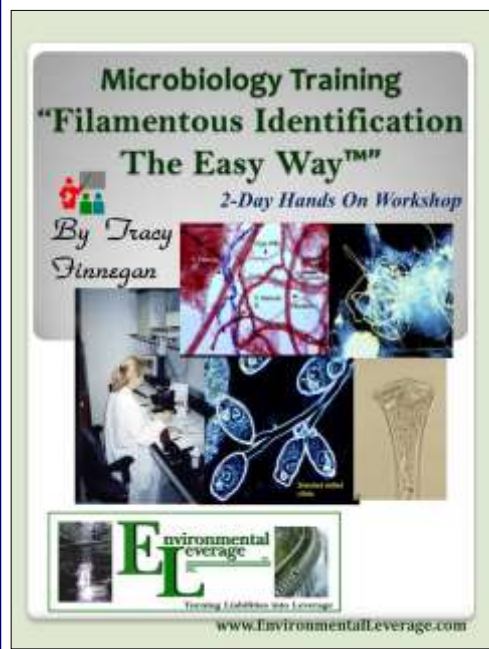
**REGISTER NOW**  
*Class size limited to  
the first 18 people!*

Two Day Hands on  
Training Class and  
Workshop

## 2-Day Training Seminar

**General Information / April 9 & 10**  
*Registration/check in - is at 8:00 am*  
*The course begins at 8:30 am and*  
*adjourns at 4:30 p.m. both days.*  
*Lunch will be provided compliments of*  
*The Village of Fox Lake*

**Registration**  
You may register by mail, telephone or Email



### The Instructor

Tracy Finnegan is an Environmental engineer with Environmental Leverage® Inc., Illinois. She was formerly associated with Nalco and Suez, where she worked for more than 12 years in numerous positions related to research, operations, design evaluation, auditing and troubleshooting. She now operates her own Environmental Engineering Company that supplies products, training, audits and services.

[www.EnvironmentalLeverage.com](http://www.EnvironmentalLeverage.com)

Tracy has taught biological wastewater process control to operators and engineers for over 23 years and performed audits and troubleshooting for ~5-6000 industrial and municipal treatment plants. Tracy holds a BS degree in Business Chemistry from Northern Illinois University.

She is a co-author in WEFTEC's Book Wastewater Biology: The MicroLife, and has now developed 12 new wastewater Training CD's.

*Please bring a 100-ml  
sample of your own  
wastewater treatment  
plant and any  
previously stained  
slides you have  
prepared for analyses  
in the workshop!*



### Accreditation

**Continuing Education Units (CEU)**  
will be available to those who attend if  
applicable

Please issue CEU: Yes No