



RIVER, LAKES, PONDS & LAGOONS

BOD, TSS REDUCTION AND
ALGAE SOLUTIONS

Case Histories



Environmental Leverage[®] Inc.

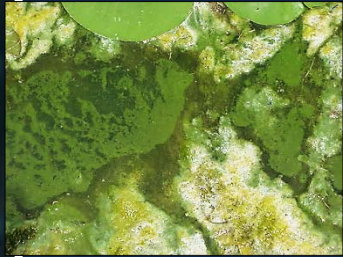
5 MILE RIVER REMEDIATION / SHANGHAI, CHINA



A program using a 2 lb.
MicroBlock™ and MicroClear® 101
was used every ½ Mile



RECREATIONAL LAKE MIDWEST



High areas of traffic like around this Marina and Gas pumps needed extra bacteria to break down oils from boats



PAPERMILL LAGOON



Papermill Lagoon with High levels of Duckweed and Foaming



Bioaugmentation program with MicroSolv™ 118, MicroClear® M100 and Nutrient optimization

FISH CLEANING STATION / RECREATIONAL LAKE



Brown Algae mixed in with green, blue/green algae.

Algae can die off as it sits in stagnant areas. Mold and fungi can grow and can build up on or around algae. These mold spores can sometimes cause false reading on fecal testing.

- MicroBlock™ used to break down organics and fish oils



GUATEMALA / LARGE LAKE AND RIVER SYSTEM



High levels of
pollution exist where
no central sanitary
systems occur.
Localized treatment
necessary

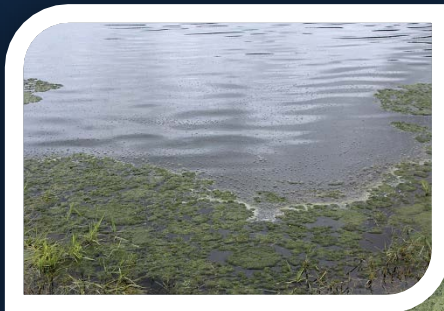


GUATEMALA CYANIDE IN LAKE NEAR MINING FACILITY



Cyanide can easily be broken down
for Mining Lagoons remediation.
With Bioaugmentation

GUNPOWDER PLANT / WW TREATMENT LAGOON

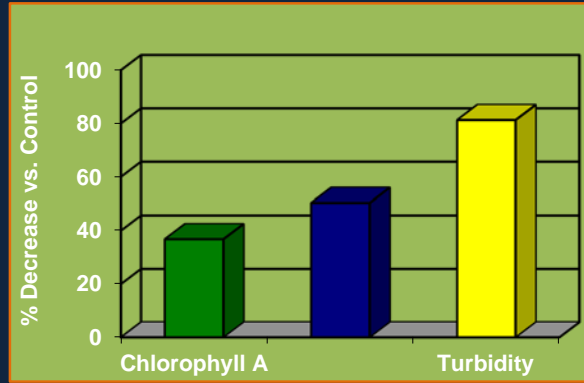


Bioaugmentation
program used upstream
at the Wastewater
Treatment Plant &
MicroClear® 101 used at
final polishing lagoons



Before and after program

APARTMENT COMPLEX



Bioaugmentation can easily reduce the Carbon, Nitrogen and Phosphorus present that causes pollution, Algae, Duckweed and Unsightly Growth or odors

COMMUNITY POND



- Top Images Before
- Bottom Images After Bioaugmentation with MicroClear® 101

HOMEOWNERS POND - CANADA



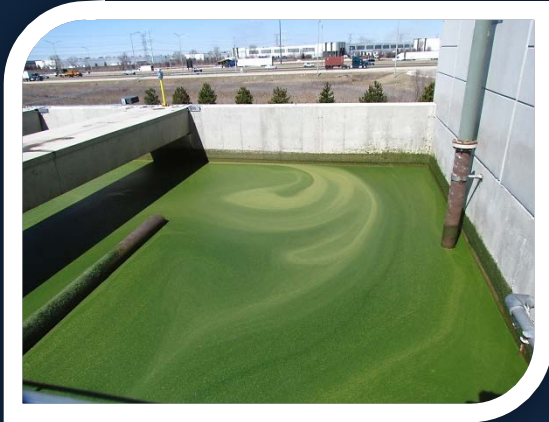
This customer has used MicroClear® 101 for over ten years now for his private pond to eliminate odors and pollution.

ALGAE IN PONDS



ALGAE ON SBR- MEATPACKING PLANT

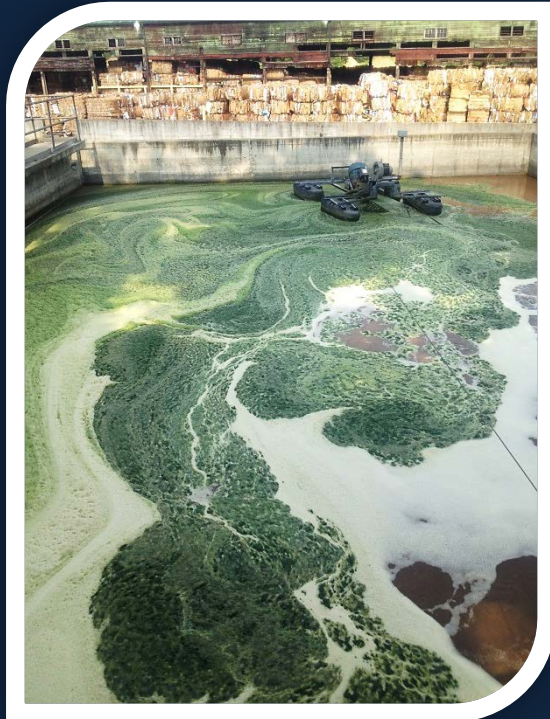
TWO IMAGES BELOW / BEFORE BIOAUGMENTATION



Above image After a
Total program using
MicroBlocks™ in lift station
for Grease (FOG control) &
a Dual program with
MicroClear® 205 and M100 for
the SBRs



PAPERMILL



This plant had issues with
BOD, TSS & Algae.

This plant started using our
dual program
Bioagumentation in 2006,
and has been maintaining
excellent results since.



PURPLE SULFUR BACTERIA



AFTER



Purple color in lagoons is a big issue and is usually not algae. Purple sulfur bacteria can easily grow and thrive in ponds, lakes, any body of water where there are high levels of septicity. Purple sulfur bacteria indicate a condition that should be addressed quickly as H_2S gasses may easily build up and cause safety issues.

Dual program not only reduced the Odors, but also reduced the TSS, BOD & harmful purple sulfur bacteria

© EnvironmentalLeverage.com

The Egg factory also addressed specific issues upstream at the plant



BIOAUGMENTATION PROGRAMS

That build our Global
business



**Pollution
Control
Odor
Reduction
Cleaner Water**

**WE ARE DEDICATED TO MAINTAINING A NATURAL,
SAFE AND GREEN ENVIRONMENT...**



so that our children can enjoy the same resources
and beauty that we have for generations.

© EnvironmentalLeverage.com



Environmental Leverage Inc.

The Next Generation of Solutions

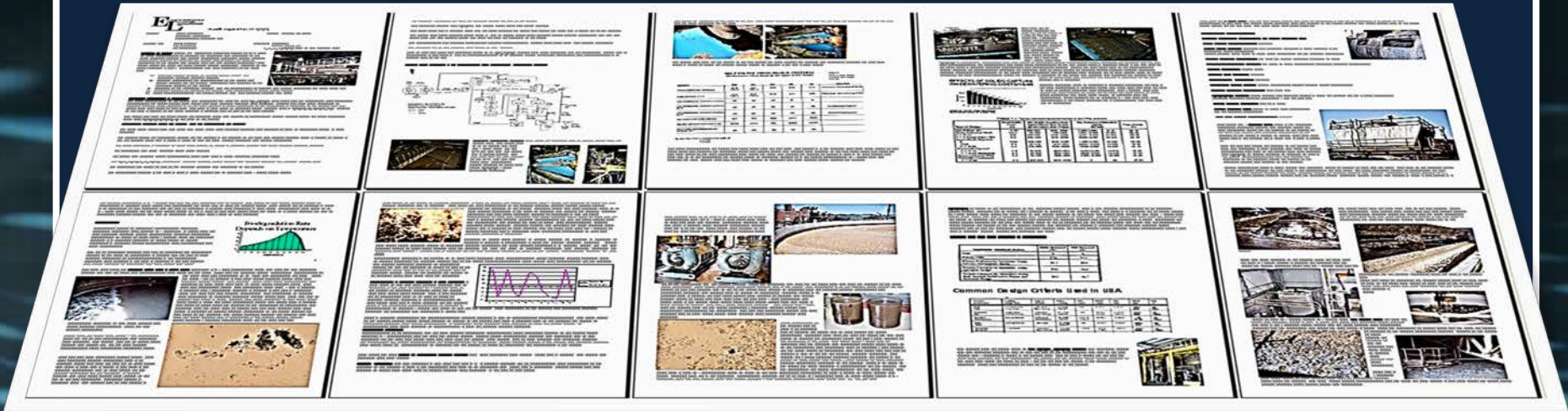
Complete Line of Bioaugmentation Products, Laboratory, Microscopic Biomass Analysis, Wastewater Training, Consulting & Total Systems Approach

- Onsite WWTP Audits & Consulting
- Beneficial Reuse & Biosolids Alternatives
- Wastewater Training Programs
- MicroClear® & MicroSolv™ Bioaugmentation Products
- Cooling Tower & Wastewater Microscopic Lab Services
- Computer Based Dosing Wizards
- Online WW ELearning Courses
- WW Training Materials
- CEU Approved



Wastewater Audits

- Full Onsite Audit of Treatment Plant Systems or “Virtual Audits”
- Evaluation of Equipment, Process Recommendations, System Optimization, Troubleshooting, Testing, Solids Handling, etc.



Wastewater Training Programs



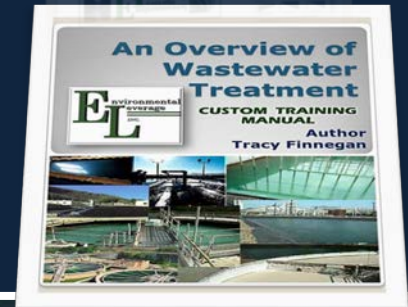
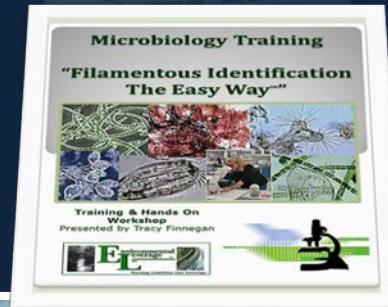
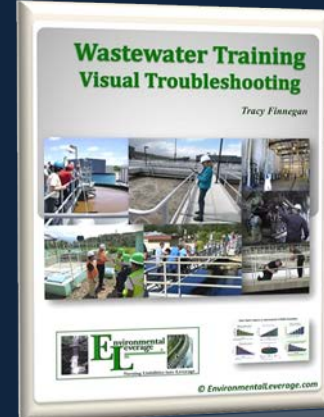
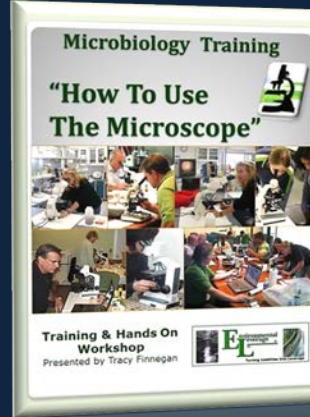
Wastewater Training Materials 4 – CD Set

- Higher Life Forms CD
- Filamentous Bacteria CD
- Overview of Wastewater Training & Systems
- Wastewater Microbiology

“Filamentous Identification
The Easy Way™” Training CD
Powerful Filamentous Training

Custom Training CD or Thumb Drive

© EnvironmentalLeverage.com



Wastewater ELearning Training Courses

Online ELearning: Wastewater Training Courses Overview

The screenshot shows the homepage of the Wastewater ELearning website. At the top, there's a banner with the text 'WELCOME TO WASTEWATER E-LEARNING' and the Environmental Everage logo. Below the banner, there's a 'MAIN MENU' with links to 'Site News', 'Frequently Asked Questions', and 'E-Learning Course Descriptions'. A 'NAVIGATION' section includes 'Home', 'Site News', 'Frequently Asked Questions', 'E-Learning Course Descriptions', and 'Training Course Summary Courses'. An 'ACTIVITIES' section lists 'Forum', 'Resources', and 'SCADA packages'. A 'LOG IN' section has fields for 'Username / email' and 'Password', with options for 'Remember username' and 'Create new account'. A 'NEWSLETTER' section is also present. The main content area features a 'Our First Set of Classes started in April 2016' announcement, a 'Wastewater Training Courses Overview' section with text and images, and a 'Courses' section with a search bar. A calendar for July 2017 is visible on the right side of the page.

Control & Minimization of Total costs of operations is always necessary, but guaranteed reliability & long term sustainability are the keys to transport your wastewater treatment system above & beyond normally targeted measures. These wastewater training programs are based upon years of experience and accumulation of practices on actual performance of thousands of treatment systems. These wastewater training programs have been consistently successful in teaching people how to be proactive and achieve their goals of reducing Total Costs of Operation while also achieving compliance.

You will learn step by step procedures which will enable you or your operators to develop quick, easy to establish system checks to control and monitor your system in order to predict upsets, minimize energy and chemical usage & avoid costly repairs and unnecessary maintenance procedures.

These courses have been pre-approved for Wastewater CEU's in Alaska, Arkansas, California, Connecticut, Delaware, Georgia, Hawaii, Idaho, Indiana, Louisiana, Maine, Massachusetts, Minnesota, Nevada, New Jersey, New York, North Carolina, South Dakota, Tennessee, Vermont, Washington, Wisconsin and West Virginia. **Some states do not require pre-approval. If you need these approved for your state, please contact our office.**

These courses are eligible for CEU's, Contact Hours or PDH (Professional development hour) in Alabama, Arizona, Maryland, Virginia and more to come. Now approved in Canada for Nova Scotia and Saskatchewan.

- Online computer-based training
- Interactive courses with videos, photos & quizzes
- Convenience and flexibility at your individual pace
- No travel expenses or hassles.

www.WastewaterElearning/Elearning.com

Environmental Leverage's Analytical Services

Always striving to bring the latest technology available to you!

- Wastewater Biomass Analysis

- Filamentous Identification

- Cooling Tower Microbio Analyses

Environmental Leverage Inc.

Wastewater Microbiology Lab Testing

Standard Wastewater

Biomass Analyses :

Cover letter with comments, recommendations and troubleshooting tips.

Higher life form sheet

Floc structure analyses

Photo Sheets

A CD with photos and videos included \$250.00

India Ink and Lactophenol Cotton Blue Stains

Filament Causes and Controls

Wastewater Biomass Analyses with Filamentous Identification including Gram and Neisser stains, suggestions on causes and control, troubleshooting tips as well as the standard analyses. \$350.00

Wastewater Biomass Analyses

Floc Characterization Worksheet

Filamentous Identification Worksheet

Higher Life Form or "Higher Organisms"

Send 50-100 ml sample in plastic container overnight. No ice cubes, blue ice only. Call to set up sample testing 630-906-9791. Results same day as sample received

Filamentous Identification

Quality • Service

Welcome



Products: Biological Products and Services
 Services: EPC, O&M, Audit, All Training
 ABOUT US: Environmental Leverage
 CONTACT US: Call now to schedule a consultation
 Site EPP: Only for our Environmental Leverage
 TRAINING: Online O&M, Manuals, Courses and Online

Home | Contact | Search

Biological Products:
 Biodegradation products for applications in Papermills, Refineries, Chemicals, Tanneries, Milk quality, Textiles, Steel, Agriculture, Animal feeds, Cattle Poultry, Food and Beverage, Dairy Products, Orange Juice Factory, Wineries, Cereal, Factory, Vegetable processing plant, Meat packing, Barbecue, Pickle, Dairy, Beverage, Ornamental Plants for major countries, C&C, Hazardous, Military, Campgrounds, Universities, Regulatory agencies

Quality Environmental Products and Services!
 With all the concerns today about environmental liability, some of the key issues that manufacturers face include: Globalization, impact of new Science and Engineering technology, Information systems and e-Commerce, Supply chain management, Changes in production processes and manufacturing, Sustainability, Significant impact on Energy savings and Environmental performance. At Environmental Leverage all of these issues are important concerns.

Delivering you innovative and technical expertise and sound business solutions to help you improve your bottom line is our goal.

Capabilities:

Latest News:


What's New:
 We have just added "Virtual Audits" to our capabilities. Check out our new Services. We are in the process of developing an "Online E University" in order to meet the needs of our global customers that cannot travel to our



TURNING LIABILITIES INTO LEVERAGE

- Training & Treatment Systems Audits
- Newsletters (digital monthly troubleshooting)
- Troubleshooting
- Filamentous ID.
- Higher Life Forms
- Bug of the Month
- Microscopic Biomass Analyses

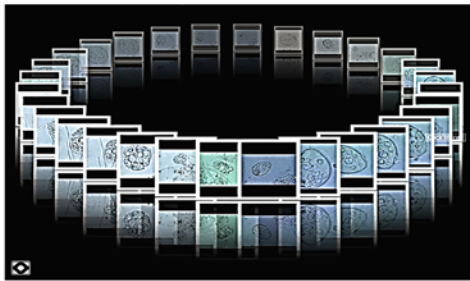
Photo Gallery - Mystery Bug of the Month



Home | Contact | Search | Home | Services | Products | Contact | Troubleshooting | Training

Mystery Bug of The Month - From 2004 - 2017

What's New:
 We now have a brand new "Higher Life Form videos" in our Training CD kit. Check out our new Training Materials. We are also in the process of developing an "Online University" in order to meet the needs of our global customers that cannot travel to our public classes. Stay tuned for details and updates.



Free swimming ciliates
 These photomicrographs were taken from a wastewater sample. Most of the objectives used were 100x, 400x and 1000x. You can see this free swimmer open what looks like a flag to capture food. Notice how when you go from low power to a higher magnification, more details jump out. Do not be afraid to go up to a higher magnification, even 1000x!

Biological Products:
 Biodegradation products for applications in Papermills, Refineries, Chemicals, Tanneries, Milk quality, Textiles, Steel, Agriculture, Animal feeds, Cattle Poultry, Food and Beverage, Dairy Products, Orange Juice Factory, Wineries, Cereal, Factory, Vegetable processing plant, Meat packing, Barbecue, Pickle, Dairy, Beverage, Ornamental Plants for major countries, C&C, Hazardous, Military, Campgrounds, Universities, Regulatory agencies



Join
Environmental Leverage®
on a Journey into the Future
with our next generation of
Water & Wastewater
Treatment solutions



Environmental Leverage® Inc.
1454 Louis Bork Drive
Batavia, IL 60510 USA
Phone: 630-906-9791
Fax: 630-906-9792
Admin@EnvironmentalLeverage.com
www.EnvironmentalLeverage.com
www.WastewaterELearning.com

The future begins now. . . .

Environmental Leverage® Inc.
bringing you Tomorrow's
Water Today !!!!



© EnvironmentalLeverage.com