

## Biological Wastewater Treatment Training Seminar

You don't have to struggle with waste water issues again. Spend just one day at this seminar, and you'll never feel overwhelmed again!

Price \$175.00

Date Jan. 31<sup>st</sup>, 2012

Time 8:30a – 4:30p

Location @ **Sutter Home Winery**,  
100 Main St. South, St. Helena, CA 94574

This seminar will present operations overview, training, troubleshooting and microscopic laboratory techniques necessary to control the wastewater treatment process with an emphasis on process monitoring and trouble shooting. These approaches are equally applicable to domestic, agriculture and industrial facilities. Past participants from industries such as refining, petrochemical, meat packing, food processing and pulp/paper have been successful in applying these methods to control their processes. Please bring a MLSS sample of your system.

### Course Materials

Each attendee will receive complete class notes and a Wastewater Microscopic Training CD (valued at \$250.00).

### Who should attend?

The course is designed for all wastewater professionals, particularly operations personnel, such as operators, engineers and laboratory personnel. The course size is limited to the first 25 people for this class.

### Accreditation

Continuing Education Units (CEU) will be available to those who attend where applicable.

Please issue CEU: circle Yes No

## Registration Form for Seminar Wastewater Treatment Process Control January 31<sup>st</sup> 2012 with Environmental Leverage, Inc.

Name \_\_\_\_\_

Position or Title \_\_\_\_\_

Organization \_\_\_\_\_

Business Address \_\_\_\_\_

City, Province, Postal Code \_\_\_\_\_

Business Phone \_\_\_\_\_

Business Fax or e- mail \_\_\_\_\_

### Registration Fee

Full Course- \$175.00

Late Fee- \$25.00 (After January 15<sup>th</sup>)

### Method of Payment

Check, Credit Card or Purchase order

Please make checks or purchase orders to:

**Environmental Leverage, Inc.**

812 Dogwood Dr. North Aurora, IL 60542

Phone: 630-906-9791

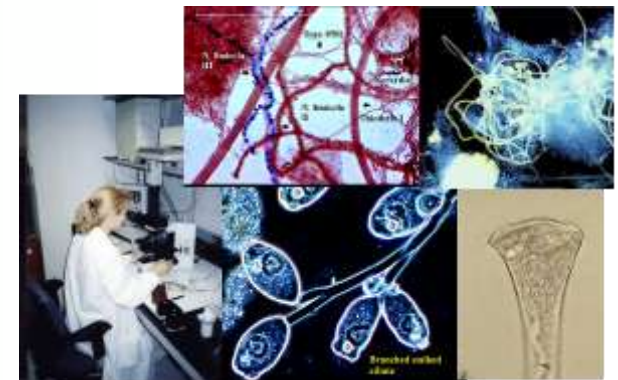
Total Amount enclosed \$ \_\_\_\_\_

[www.EnvironmentalLeverage.com](http://www.EnvironmentalLeverage.com)



## Course Outline

Basic Activated Sludge Microbiology  
Hands on Microscopic Observation  
Process Overview and Process Variations  
Process Control Strategies  
Plant walk through  
Troubleshooting Activated Sludge Processes  
Visual Physical Observations  
Filaments and Foam Control  
Solids Carryover and Settling Problems



## Are Wastewater Treatment problems getting to you lately?



Don't miss this opportunity to increase your knowledge of biological process control and learn how to troubleshoot and optimize your plant.

### Seminar Information

Registration/check in is at 8:00 a.m. January 31<sup>st</sup>. The course begins at 8:30 a.m. and adjourns at 4-4:30 p.m.

Lunch will be provided compliments of  
[Sutter Home Winery](#)  
Dave Sneed 707-302-3090

### Registration for Seminar

You may register by mail, telephone or fax:

**Environmental Leverage Inc.**

812 Dogwood Dr. North Aurora, IL 60542

Phone: (630)- 906-9791

Fax: (630)- 906-9792



### The Instructor

Tracy Finnegan is an Environmental engineer with Environmental Leverage Inc., Illinois. She was formerly associated with Nalco Chemical Company, where she worked for more than 12 years in numerous positions related to research, operations, design evaluation, auditing and troubleshooting. She now heads her own Environmental Engineering Company for 10yrs that supplies wastewater products, training, audits and consulting services.

### [www.EnvironmentalLeverage.com](http://www.EnvironmentalLeverage.com)

Tracy has taught biological wastewater process control to operators and engineers for over 19 years and performed audits and troubleshooting for ~5-6000 industrial and municipal treatment plants worldwide. Tracy holds a BS degree in Business Chemistry from Northern Illinois University. She is a contributing author in WEFTEC's Book- Wastewater Biology: The Microlife. She has written 12 Wastewater training manuals and CD's.



### Training Course Location:

**Napa Valley- St Helena, California @  
Sutter Home Winery**

For additional information contact:  
Tracy Finnegan (630)-906-9791 or  
Bryan Cook, Corp. Sales

## Biological Wastewater Treatment Training Seminar by Environmental Leverage, Inc.

Activated Sludge Systems

January 31<sup>st</sup>, 2012

Register early, class size is limited!

*Seminar Class held at the Sutter Home Winery,  
100 Main Street South, St. Helena, CA 94574*

**Napa Area Wineries & Treatment Plants**

**A Training Seminar Sponsored by;**

## Environmental Leverage

[www.EnvironmentalLeverage.com](http://www.EnvironmentalLeverage.com)

**Sutter Home Location for Seminar**

