

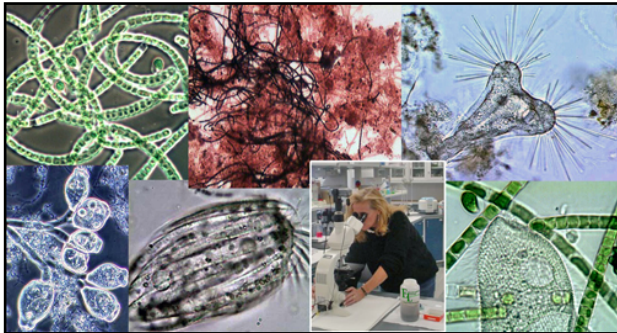
**It's Finally Here!**  
**Filamentous Identification**  
**The Easy Way™**



**2-Day Training Class!!**

A Seminar Sponsored by

**Environmental Leverage® Inc.**



**Look what else you will receive**

© Course Materials

Each attendee will receive  
complete class workbook & our latest  
Training CD version of

**"Filamentous Identification  
The Easy Way™"**

The Training CD alone, is valued at the same  
price of the class. Yours for attending.

# Registration Form

**Filamentous Identification -The Easy Way™!**

*April Weds 1<sup>st</sup> – Thurs. 2<sup>nd</sup> 2020*

*8:00am – 4:30 pm*

Training held at: Environmental Leverage  
1454 Louis Bork Ave. - Batavia, IL 60510

Name

Position or Title

Organization

Business Address

City/State, Province, Postal Code

Business Phone

EMAIL

**Registration Fee Paid to Environmental Leverage**

Full Course - \$395

Method of Payment

Check, Visa, Master Card, Discover or  
Approved Purchase orders

**Do Not Forget Your 100ml Mixed Liquor Sample to bring.**

**Please make checks or purchase orders out to:**

Environmental Leverage Inc.

Total Amount enclosed \$ \_\_\_\_\_

*Reg. Mailing Address Only:*

812 Dogwood Dr. Suite A., North Aurora, IL 60542

Phone: 630-906-9791 or Fax: 630-906-9792

**Email: [Wastewater@EnvironmentalLeverage.com](mailto:Wastewater@EnvironmentalLeverage.com)**

## 2-Day Class Outline

### Day 1

Microbiology Overview

Floc Analyses

Sample Handling & Prep.

Filamentous Identification

Causes and Controls

Troubleshooting, Case Histories

Process Control Strategies

Filaments and Foam control

Solids Carryover & Settling

Problems

Hands on Microscope/Wet Mounts

Sample Round Robin

### Day 2

#### Hands on workshop

Microscope Use/Filaments

Stains & Techniques

Hands on Microscopic

Observation

Stained Test Samples

Individual Plant Samples

Plant Troubleshooting

### Who should attend?

*The course is designed for all  
Wastewater professionals, particularly  
operations personnel, such as  
operators, engineers and laboratory  
personnel. The course size is limited to  
the first 20 people for this class.*

**Filamentous ID Training Class**

**April Weds 1<sup>st</sup> – Thurs. 2<sup>nd</sup>**

# Filamentous Identification The Easy Way™!

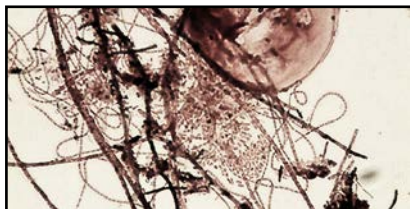
**You Will Not Want To Miss This Class.**

For additional information contact:  
Environmental Leverage® Inc.  
630-906-9791 or  
[Wastewater@EnvironmentalLeverage.com](mailto:Wastewater@EnvironmentalLeverage.com)  
Wastewater Training Seminar held at  
*Environmental Leverage*  
1454 Louis Bork Dr. Batavia, IL  
April Weds 1<sup>st</sup> – Thurs. 2<sup>nd</sup> 2020

**REGISTER NOW**  
Class size limited to the  
first 20 people!

*Lunch included both days*

Two Day Hands on Wastewater  
Filamentous ID Training Class  
& Workshop.



## 2 - Day Filamentous ID Wastewater Training Seminar Environmental Leverage of Batavia, Illinois

General Information / April Weds 1<sup>st</sup> –  
Thurs. 2<sup>nd</sup> 2020

Registration/check in - is at 7:45 am

The course begins at 8:00 am &

Adjourns at 4:30 p.m. both days.

*Lunch both days will be provided compliments of  
Environmental Leverage Inc.*

Registration: 2 Days w/lunch \$395.00

You may register by mail, telephone or Email



Microbiology Training  
"Filamentous Identification  
The Easy Way™"

2-Day Hands On Workshop

By Tracy  
Finnegan



[www.EnvironmentalLeverage.com](http://www.EnvironmentalLeverage.com)

### The Instructor

Tracy Finnegan is an Environmental engineer with Environmental Leverage® Inc., Illinois. She was formerly associated with Nalco and Suez, where she worked for more than 12 years in numerous positions related to research, operations, design evaluation, auditing and troubleshooting. She now operates her own Environmental Engineering Company that supplies products, training, system audits and services for Wastewater.

[www.EnvironmentalLeverage.com](http://www.EnvironmentalLeverage.com)

Tracy has taught biological wastewater process control to operators and engineers for over 27 years & performed treatment system audits / troubleshooting for ~5-6000 industrial and municipal treatment plants. Tracy holds a BS degree in Business Chemistry from Northern Illinois University.

She is a co-author in WEFTEC's Book Wastewater Biology: The MicroLife, and has now developed 12 new wastewater Training CD's and Created Wastewater ELearning.

[www.WastewaterElearning.com/Elearning](http://www.WastewaterElearning.com/Elearning)

Please bring a  
100-ml sample of  
your own MLSS  
Wastewater  
Treatment System  
& any previously  
stained slides you  
have prepared for  
analyses in the  
workshop!

