

# Municipality Case History





Grease in Manhole outside Chinese restaurant  
prior to bioaugmentation







Oxidation ditch  
7-7-11  
Before  
Bioaugmentation



Oxidation ditch  
8-8-11  
After  
Bioaugmentation





Notice the grease shelf along the walls 7-7-11

WETWELL

8-8-11 after short term use of bioaugmentation





# Clarifier



7-7-11 Before Bioaugmentation



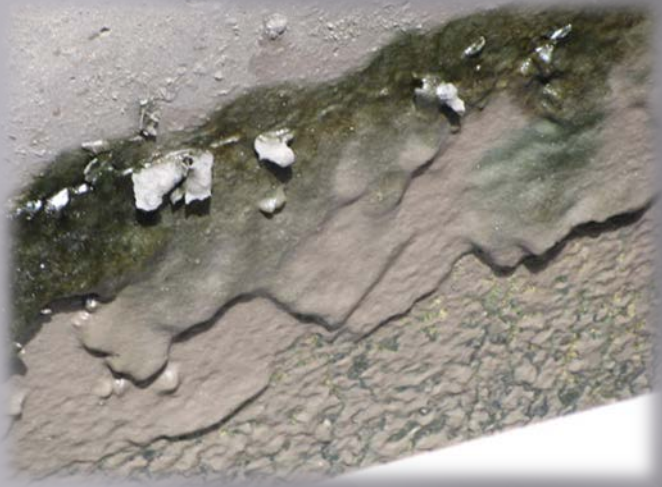
8-8-11 After Bioaugmentation



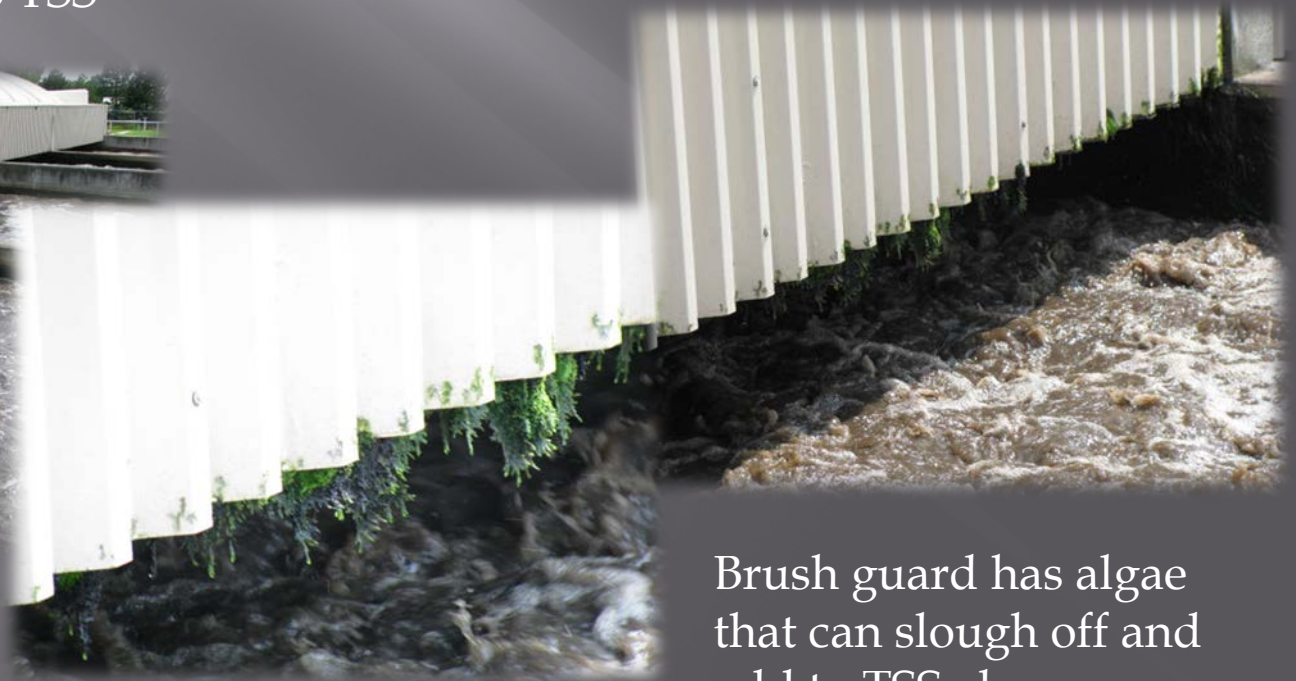
High levels of gassing and ashing



Lower levels of ashing and gassing but still scum and solids in centerwell

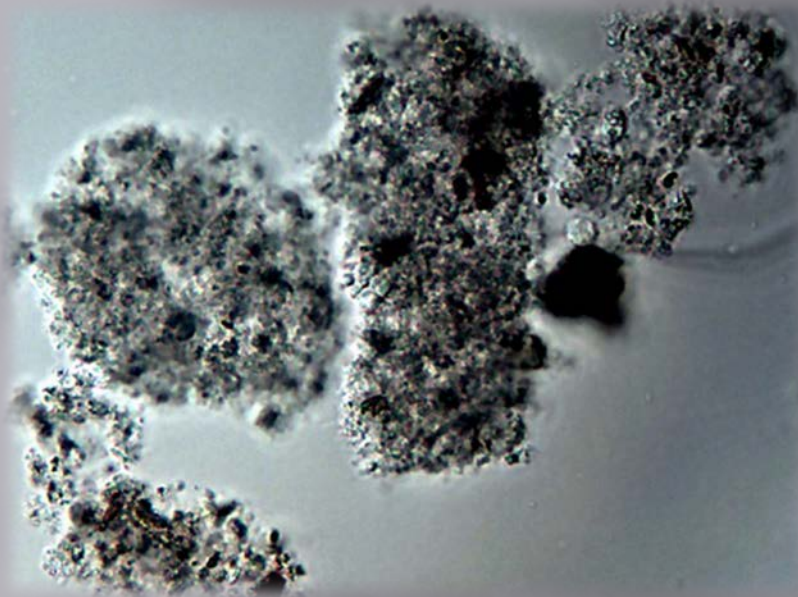


Inlet channel does have scum on sidewall build up that can slough off and add to TSS

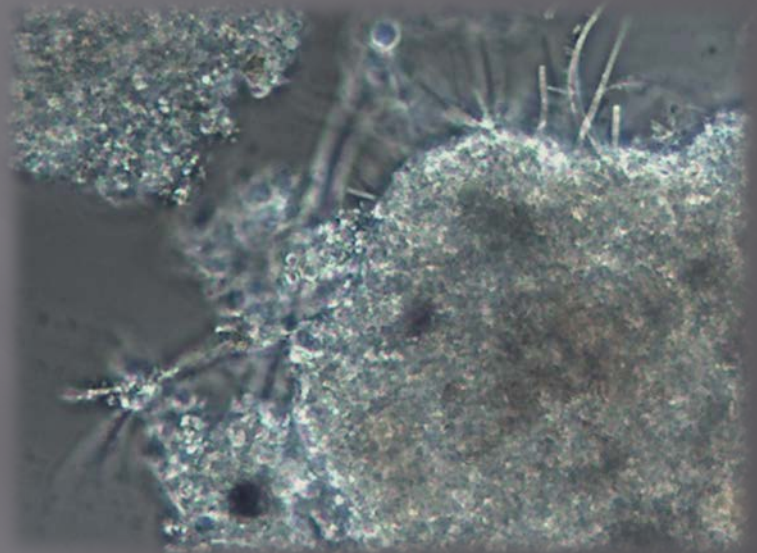


Brush guard has algae that can slough off and add to TSS also

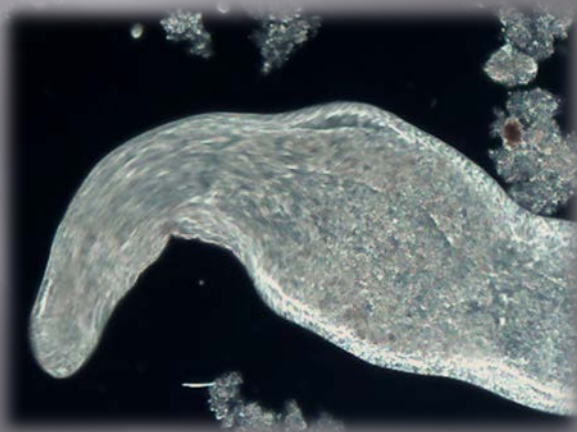




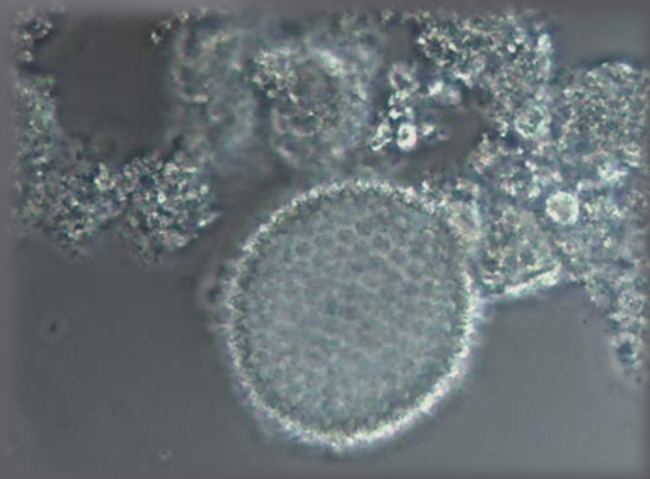
Some black spots due to septicity



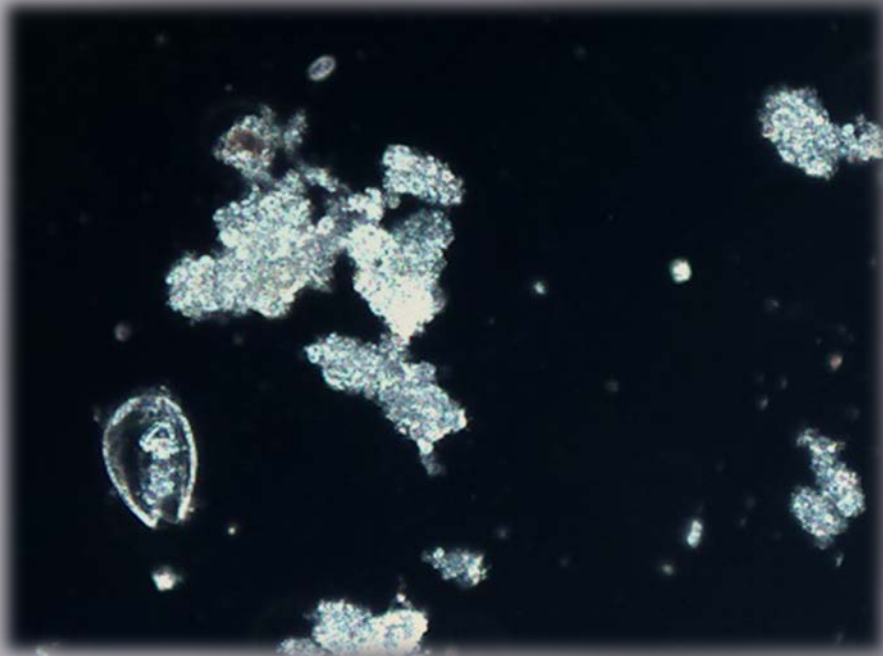
Only a few filaments



Worm



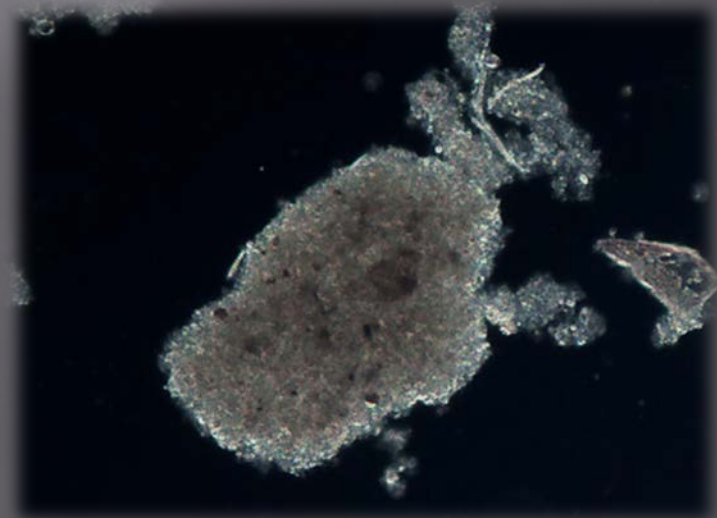
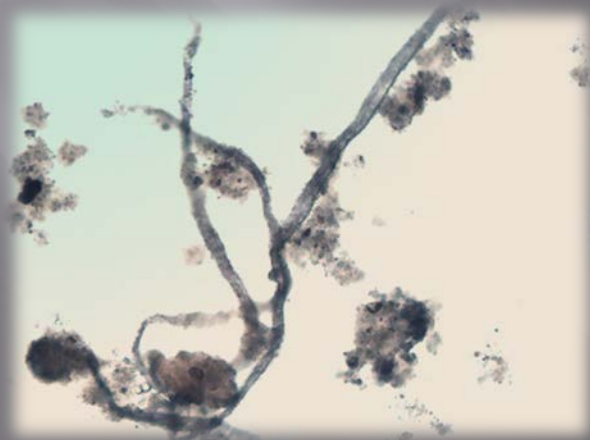
Pollen



A little bit of fiber, check screening



Stalked ciliates



Nice firm, compact floc, clear supernatant