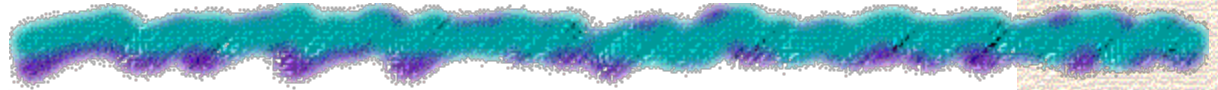


BAKERY AND SNACKS CASE HISTORIES

by Tracy Finnegan



BAKERY LIFT STATIONS

Grease in Lift Station



Grease in lift station
from Bakery

- Cookies, cakes,
pies



Lift station after only
2 weeks of
bioaugmentation
program

BAKERY WITH GREASE

- A bioagumentation program with bioblocks and the supplemental addition of nutrients was implemented into a lift station at a bakery. This bakery had fought grease issues for years and had tried other chemical and biological products.



KEYS TO SUCCESSFUL PROGRAM

- Raise float to 1 inch above grease shelf
- Environmental MicroBlock program
- Addition of fertilizer 2 x per week (supplemental N and P)



BAKERY #2 COOKIES

Surcharge reduction in wetwell

Implementation of Biological products

6 hr retention time prior to discharge to city

Use of bioagumentation products, pH adjustment, and N and P addition

40-60% reduction in fees to city achieved for BOD removal

BAKED GOODS MANUFACTURING FACILITY #3 (CRACKERS, CEREAL, ETC.)

Bioaugmentation for troubleshooting

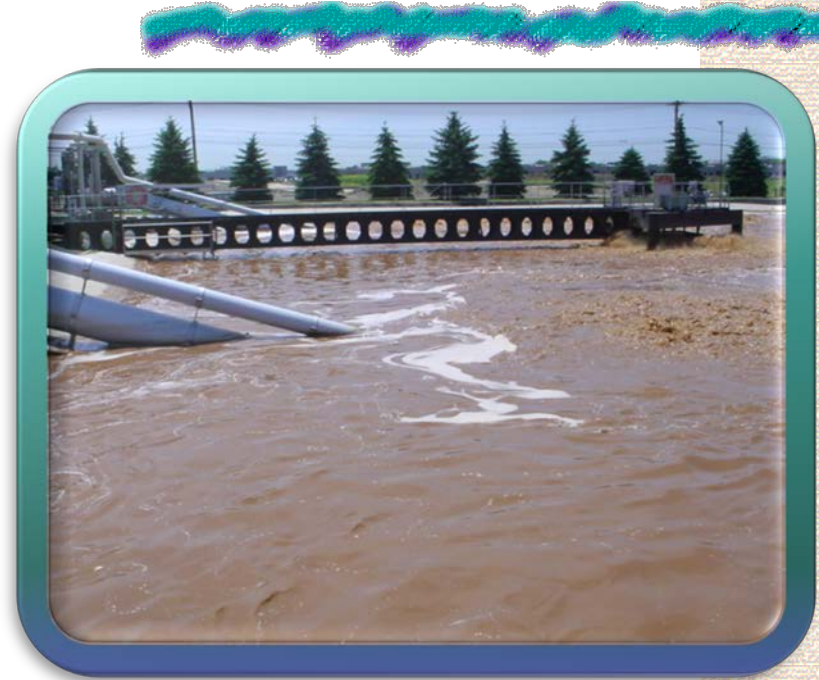
Filamentous bulking and foaming

High solids handling costs

Spills of specific chemicals



BAKED GOODS MANUFACTURING



Foaming before and after bioaugmentation

#4 Bakery Lift Stations



High levels of zooglea and slime in lift station due to oils and grease.

MicroClear® MicroBlock used to break down FOG.



Bakery Butters and Oils



Shortening, butter, oils and sprays are used at many bakeries. Use of MicroClear® Microblock in lift stations and MicroClear® 207 in drains easily will break down oils and grease and lower surcharges.



#5 Snack Factory East Coast



Oils from productions as well as lubricating oils causing high levels of organics

MicroClear® MicroBlock used in lift stations

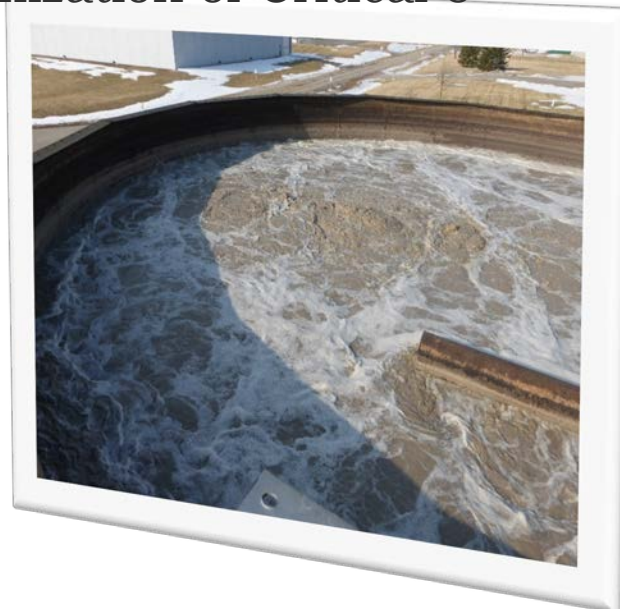


#6 Snack Factory Midwest



High foaming due to overload of BOD

Bioaugmentation w/
MicroClear® M100 and
MicroClear® 205 and
optimization of Critical 5



Questions



EnvironmentalLeverage.com

The screenshot shows the homepage of EnvironmentalLeverage.com. At the top, there is a 'Welcome' banner with the company logo and tagline 'Partnering & Educating Into Leverage'. Below this is a navigation menu with links for Home, Services, Products, Contact, Troubleshooting, and Training. A central banner features the text 'Environmental Expertise' and 'Onsite Audit and Consulting' over an image of an industrial facility. On the left side, there is a vertical menu with categories: Products (Biological Products and Microorganisms), Services (Lab Consulting, Audits and Training), About Us (Reference Professional Expertise), Contact Us (Call now to schedule an onsite audit), Site Map (Can't find your knowledge here), and Training (Training CD's Manual, Classes and Onsite). Below the navigation menu, there is a section titled 'Quality Environmental Products and Services!' with a 'Learn More!' button. A 'What's New!' section highlights 'Virtual Audits'.

This screenshot shows the 'Mystery Bug of the Month' page for January 2008. The page features a 'Photo Gallery-Mystery Bug of the Month' header with the company logo. A 'Navigate' sidebar on the left lists various site sections, with 'Bug of the Month' highlighted. The main content area is titled 'Mystery Bug of the Month-January 2008' and displays a grid of photomicrographs of swimming ciliates. A 'What's New!' sidebar on the right mentions 'Higher Life Form videos' in the Training CD list. Below the images, a caption reads: 'Free swimming ciliates. These photomicrographs were taken from a wastewater sample. Most of the objectives used were 100x, 400x and 1000x. You can see this free swimmer open what looks like a flap to capture food. Notice how when you go from low power to a higher magnification, more details jump out. Do not be afraid to go up to a higher magnification, even 1000x!'

Training

Troubleshooting

Filamentous

Higher Life Forms

Products

Bug of the Month

Microscopic



**Join Environmental Leverage on a Journey
into the Future with our next generation of
Water and Wastewater Treatment solutions**

The future begins now. . . .

**Environmental Leverage bringing you
Tomorrow's water today!!!!**

Check out our new Elearning

WastewaterElearning.com/elearning

©Environmental Leverage Inc.

1454 Louis Bork Drive

Batavia, IL 60510 USA

Phone-1-630-906-9791

Fax-1-630-906-9792

Admin@EnvironmentalLeverage.com

www.EnvironmentalLeverage.com



Turning Liabilities Into Leverage!

